



KITE MANUAL

Important Notice

This is not a kiteboarding instruction manual! Reading this manual does not eliminate the need for professional instruction in the sport of traction kiting. The user is therefore advised to obtain such instruction in addition to familiarizing himself or herself with the information contained in this manual prior to flying this or any other power traction kite. Competent instruction may be obtained through an authorized Ocean Rodeo dealer or local professionally qualified kiteboarding school. For information on lessons in your area go to www.oceanrodeo.com/kiteboarding/L2K

Introduction

Congratulations on purchasing an Ocean Rodeo kite. We trust that you will find it to be a superior product. Our kites are the result of years of passionate R&D mixed with technical expertise. Enjoy!

A label showing your serial number is sewn at the underside of the leading edge center strut.



Important

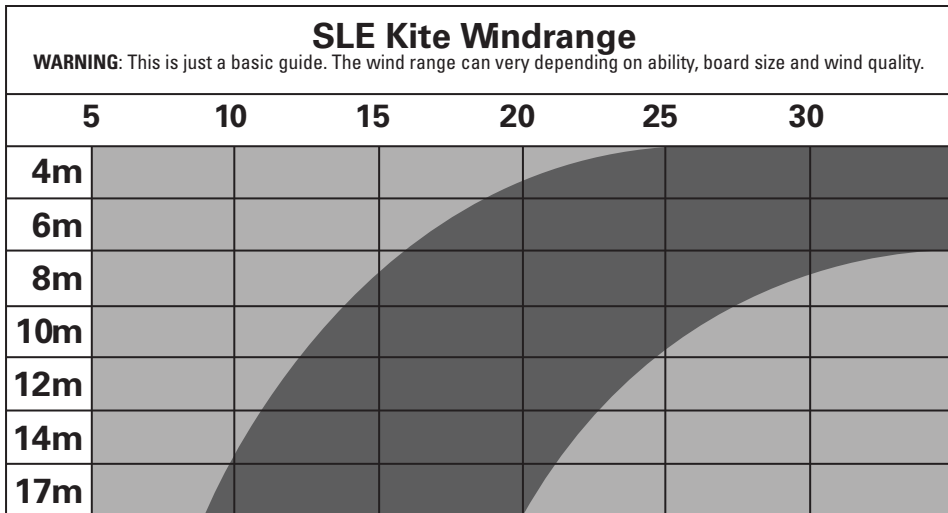
A user manual and release of liability agreement is included with each new kite. Read it. (Release of liability is printed at inflation point on leading edge tube.) Replacement manuals may be obtained from the Ocean Rodeo website: www.oceanrodeo.com. If additional outfitting is required use manufacturer's approved materials only. Do not impair or remove any safety release systems. The user of this product acknowledges both an understanding and an assumption of the risk involved in kite powered sports.

SAFETY WARNING: Kite powered sports can be very dangerous and physically demanding. The user of this product should understand that participating in kite powered sports may involve serious injury or death and agrees to observe the following safety precautions:

- Get instruction specific to the type of kite power craft.
- Obtain first aid training and carry first aid and safety/ rescue devices.
- Consult your physician prior to beginning kite powered sports training.
- Always wear a nationally approved personal floatation device when using a kite on water.
- Always wear a helmet.
- Dress appropriately for weather conditions; cold water and/ or cold weather can result in hypothermia.
- Check your equipment prior to each use for signs of wear or failure.
- Never kite alone.
- Do not kite in overpowered, gusty wind conditions.
- Do not kite in offshore wind conditions.
- Before launching from an unfamiliar site be aware of any dangers (rocks, reefs, currents, changeable weather, etc).
- Scout unfamiliar sites before launching.
- Never launch from an area with any obstacles closer than 2 line lengths downwind (people, rocks, etc).
- Do not kite near power lines!
- Do not ask a non-kiter to assist in the launching or landing of a kite.
- Always use the kite with a functioning safety system.
- Always prevent kites from inadvertently launching on land by weighting with sand, gravel, etc.
- Always announce when you are going to launch your kite so people can be prepared to move in the event of a gust or a problem.
- Disable an unattended kite by: removing the lines; placing the kite leading edge down, facing the wind; and weighting with sand, gravel, etc.
- Do not exceed your kiting ability. Be honest with yourself.
- You must not use alcohol or mind altering drugs prior to using this product.

Selecting Kite Size:

Select the right size kite for the conditions, your ability and weight. This chart is a rough guideline. Many factors can affect your decision of which size of kite to use: body weight; wind direction and steadiness; kiting ability; line length, board size, etc should all be considered. When in doubt ask someone who is capable or, if there is no one to ask, err on the side of caution with a smaller sized kite!



Location:

Safe site criteria

The site for your kiteboarding must meet the following criteria to ensure your safety and that of others:

- No power lines within 3 line lengths (100 meters) of beach
- No trees 1 line length (30 meters) from beach
- Free from beach obstructions: logs, boulders, slippery seaweed, etc.

Ideal site conditions:

- Side shore wind
- Smooth, steady moderate strength wind (8-15 knots)
- Wide sandy beach
- Shallow water close to shore
- Large area of beach downwind free from obstructions
- A clear bottom free of rocks, corals, excessive seaweeds, etc

Organize a kitesurfing area

- A take off area
- A water entry area
- A landing area

KITE MANUAL

Assembly of Kite

Your kite has a single point, speed inflate / deflate system to allow for quick and easy inflation.

1. Select an area free of obstruction, the same or larger than the span of your kite. Avoid areas with sharp objects (thorns, sharp stick, etc).
2. Unroll the kite completely, attach the pump leash to the kite.



3. Make sure lower (dump) valve is closed and upper (inflate) valve is open. Connect pump and inflate until leading edge is firm and maintains it's shape.



Important!

- Before you inflate your kite make sure you have a suitable "anchor" to weigh down your kite (sand, fine gravel, weight bag, etc).
- Before connecting the hose to the valve, make several pumps to clear any debris (sand, stones, etc) Debris in the bladder can cause small punctures.
- When pumping up a kite for its first time, make sure the inner bladder is filling up all corners of the strut.
- Under inflated kites can cause kite distortion in some conditions.
- Over inflating a kite can damage your stuts & leading edge tube.

4. Make sure top cap is free of sand and screw “snug”, yet not so tight you wont be able to unscrew later.



5. Pinch clamps to seal off the struts.



6. Holding kite at center of leading edge rotate so that kite sits leading edge down and into the wind. Use a weight (sand, fine gravel, no sharp objects) to weigh down the leading edge of the kite.

7. To deflate use the deflate dump valve. First unscrew the top cap, as this will make setup faster next time. Unscrew lower cap to release air. Store with both caps unscrewed!



Helpful Tip: We recommend using a bag that contains sand, fine gravel, etc for weighting the kite. This reduces your kite's exposure to abrasion.

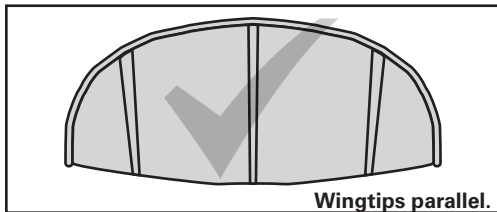
Use The Correct Kite Control Bar:

The increased de-power of the SLE kite design and sheeting range can only be realized when used with a bar that offers a long sheeting throw. OR bars are designed to allow the bridle of the SLE kite to depower when the bar is sheeted out. Maximum depower can be achieved on Ocean Rodeo kite bars that offer a single front line flag out.

Ask your Ocean Rodeo dealer or visit oceanrodeo.com for up to date information on kite control bars.

Line Lengths And Tuning :

All lines must be of equal length when measured from bar to end of lines with the center line un-cleated and fully extended. With all lines equal the kite will perform well.



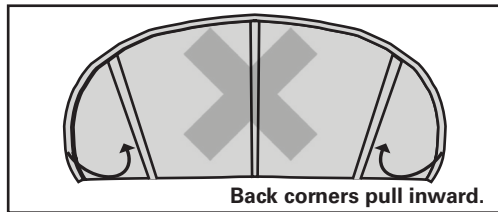
Note: Wingtips are parallel.

If the rear lines are shorter than the front lines the kite will be prone to stalling! It would look like the 2nd kite pictured

Note: Wingtips angle inwards towards rear of kite.

Line length can affect turning and power of kite. Optimum line lengths are 15m to 35m. Shorter lines increase kite turn response but reduce the power window of the kite. Conversely, longer lines decrease turn response but increase the power window of the kite.

Note: The bridles and longer leader lines on SLE style kites will make your total line length longer. E.g. Combined 3m bridle and leader line length plus 24 m lines = 27m



Line Management:

Kite line management is a very personal thing. Stored incorrectly they can cause hours of frustration in tangles. Attached to the kite incorrectly they can create a dangerous situation for you and others. Develop a line storage strategy that works for you and do it the same way every time!

Here's what works for us:

- Don't be a kook! Have your kite pumped up and your suit and harness on before laying out your lines! Be considerate of others and recognize that tangles and confusion can result from lines left un-attended!
- Place the loose end of your lines near the center of the leading edge tube
- Unwind your lines walking upwind
- Identify lines at bar end and work your way down to the kite separating the lines
- Before attaching any lines to the kite physically separate the left front and rear, right front and rear.
- Lift your kite over the separated lines, leaving enough line length behind the kite so you do not have to drag the

bar to make contact with the pigtails on the kite.

- When storing lines re-wind in a figure 8 pattern around the bar ends to avoid twisting the line set.

Helpful Tips:

- Put some weight on your bar to stop dragging as you untangle your lines.
- Stand between the front lines and separate the front and back lines between your fingers
- Carefully work your way towards kite. If your lines are severely twisted, work in short segments starting near the loose end working away from the bar.
- Always remove seaweed from lines as it dries and can cause tangles.
- **Be sure there are no knots in your flying lines as they create a weak point!**

KITE MANUAL

Attaching flying lines to your Ocean Rodeo SLE kite.

1. Before you attach your lines have your kite pumped up leading edge down and weighted with sand or gravel.

2. Your SLE kite has front line attachments and two back line attachments supported by line bridles, locate these line attachment points.

- Rear line attachment lark's head connectors are located at the very tip of the leading edge tube. (1)

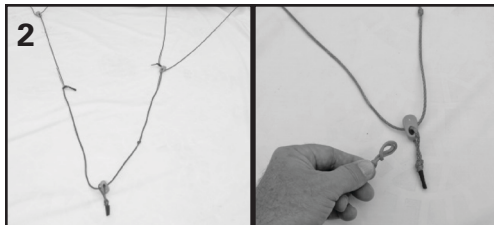
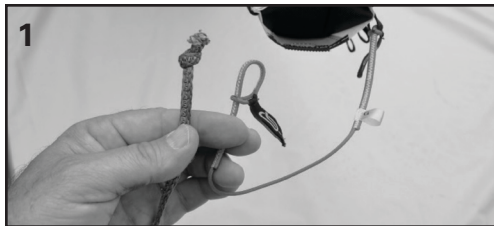
3. With the front and back attachment points free from their Velcro storage tabs pull the pigtails / lark's head connectors forward so that the bridles are in clear view.

Note: Make sure the bridles are free and clear with no twists and any pulleys are free and clear of debris. (2)

4. The rear lines connect to the kite with a foolproof connector that prevents the front and back lines from being incorrectly attached.

5. Make a final inspection of your bar system.

Important: If you are using an Ocean Rodeo bar with your SLE kite make sure your stopper is pushed away from the bar as far as possible. This will allow the bar to freely slide up the front lines and de-power the kite in the event of a gust during launch.



ADJUST KITE TURNING SPEED BY BACK LINES:

By moving back line leaders forward you will slow the turn input.

Moving back line leader back towards the trailing edge will increase turning input.



ADJUST KITE DEPOWER:

Some Ocean Rodeo kites have the option to fine tune the kites depower range.

By moving this bridle attachment forward you will increase the depower range and increase bar pressure.

By moving this bridle attachment back you will decrease the depower range and decrease bar pressure.



VARIABLE LINE LENGTHS:

Maximize the performance of your kite by using variable line lengths.

- 15m - Faster turning & smaller power strokes.
- 20m - Good overall length.
- 25 - 30m - Allows for more power, big lofty jumps & improves light wind riding

KITE MANUAL

BRIDLE LOCK:

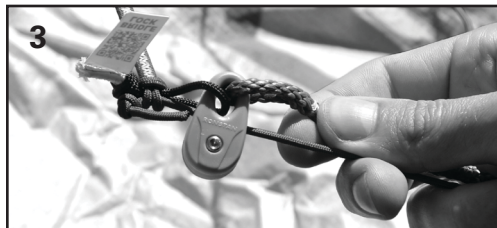
Some Ocean Rodeo kites offer the ability to lock certain pulleys on the bridle to change the handling and performance of the kite.

Unlock the bridles for days that demand the added sheeting range and overall depower modern SLE kites now afford. (1)

For advanced riders, lock your bridle for a tight, snappy feel and less overall depower, reducing your sheeting range ensuring your next handle pass remains as explosive and powerful as your riding can handle. (2-3)

Warning:

When using bridle lock, it is critical to use a kite control bar with a front line re-ride. The roll over bridle action will not function and the kites usable depower range is reduced.



KITE CARE AND MAINTENANCE

Proper care and maintenance will provide you with many years of enjoyment from your Ocean Rodeo kite. Important things to remember include:

- Keep your kite out of the sun when not in use.
- Deflate the leading edge and roll the kite when left on the beach to eliminate flutter damage.
- Dry the kite after using, as failure to do so can cause mildew and color bleeding.
- Rinse the kite with fresh water after extended salt water use.
- Check on the inside of the leading edge tube (where the canopy material sews on) for rocks, etc.
- Inspect the kite regularly for small tears, loose stitching and general wear, and have repaired as soon as possible.
- Beware of heat in vehicles if storing your kite with struts inflated. Excessive heat can damage valves on the kite bladder.
- Check bridles for wear.
- Check pulleys for wear and rinse to remove salt and sand.

WARRANTY

All standard Ocean Rodeo products are covered by a One Year Warranty offered to the original purchaser on workmanship, with a One Year Warranty on materials. Warranty is limited to the repair or replacement of Ocean Rodeo product at our option. The warranty does not cover damage caused by normal wear and tear, fading, misuse or negligence including, but not limited to punctures, sun exposure, seam failure due to over inflation, damage in the sun, damage caused by use in waves or shore break and damage caused by anything other than defects in material and workmanship. This warranty is invalid if unauthorized repairs have been carried out. Repairs or alterations not covered by warranty will be billed to the customer. Factory seconds and clear out products sold at a discount carry no warranty.

Ocean Rodeo also offers an unconditional, 60 Day Satisfaction Guarantee on every product we sell. If for any reason you are unsatisfied with your purchase, you can return it to your original point of purchase for a full refund within the 1st 60 days.

This offer is valid only with participating retailers, current season product, and is offered only to the original purchaser. For orders placed online, your refund will not include shipping charges, though almost everything bought online ships for free within NA and Europe. This offer is also only valid for non-professional users. If your company or organization is considering Ocean Rodeo equipment for your fleet or school, get in touch with us to talk about how we support professional buyers and their clients.

This isn't a demo program! Customers found to repeatedly take advantage of this offer will be disqualified from further returns. If you simply want to demo some gear, get in touch with your local retailer and they will gladly get you out on the water to try before you buy.



OCEAN RODEO



oceanrodeo.com

info@oceanrodeo.com

NA Toll Free 888-544-4969

EU Toll Free +44-800-756-5505

Intl +1-778-734-2696